

ELECTRONICS TESTING CENTER(ETC), TAIWAN



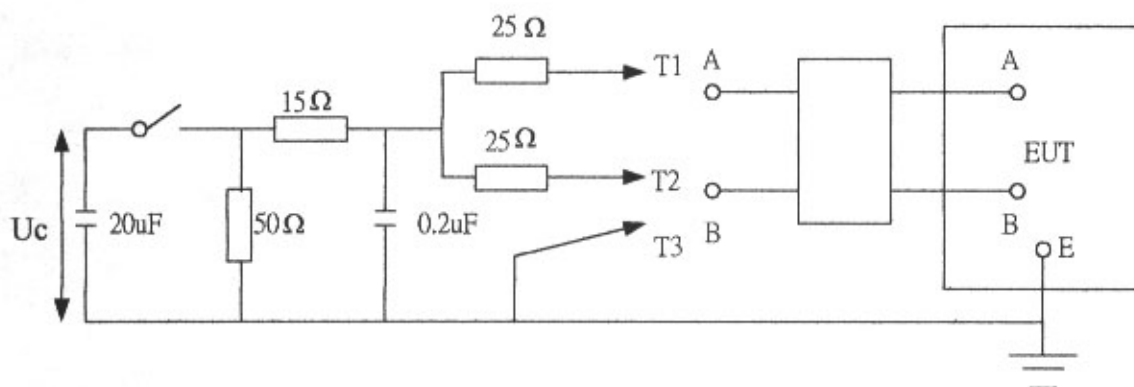
EMC TESTING DEPARTMENT (EMS SECTION)
 NO. 8 LANE 29, WEN-MING RD., LO-SHAN TSUN,
 KUI-SHAN HSIANG, TAOYUAN HSIEN, TAIWAN, R.O.C

TEL: (03)3280026#571,573
 FAX: (03)3276188

SURGE immunity test

Page: 1/1

Applicant	DrayTek CORP.		Application No.	ET92S-03-172	
Device	Wireless ADSL Router	Model No.	Vigor 2600 Series	Test Dated	MAR. 21, 2003
Test Specification	Customer's (K.21)				
Test Equipment					
Noise Ken LSS-15AX					
Climatic Condition	Ambient Temperature	21 °C	Relative Humidity	: 60%RH	Atmospheric Pressure : 986 mbar
Test Set-up	Table-top Equipment				
Operating Conditions of The Device	Stand By MODE				



Test	Terminal connections	Maximum test voltage and duration	Number of tests	Testing criterion	Test Result
Lightning surge simulation	T1 and A T2 and B	Uc(max)=8KV, 10KV,12KV	10	A	Pass
	T1 and A,B, etc. in turn, T3 and all other terminals	Uc(max)=,8KV, 10KV,12KV	10	A	Pass

Criterion A – Equipment shall withstand the test without damage or other disturbance, e.g. corruption of software or misoperation of fault-protection facilities and shall operate properly within the specified limits after the test. It is not required to operate correctly during the test.

Tested by :

Mark



Checked by :

Ken