

# The Exinda 2060

Unified Performance Management for Small Branch Offices



## The Exinda 2060

Designed for small branch offices, the 2060 model expands to support up to 20 Mbps worth of traffic and up to 50 users.

## The Challenge

Everyday more and more data is being pushed across our networks. Increased growth and reliance of web based applications, VoIP, streaming video and Internet usage have congested our networks and made them unreliable. Network users are spending more and more time waiting at screen (TWS) as applications compete for finite resources over stressed, over-run networks. This proliferation of traffic has degraded our networks' speed and performance and resulted in productivity losses.

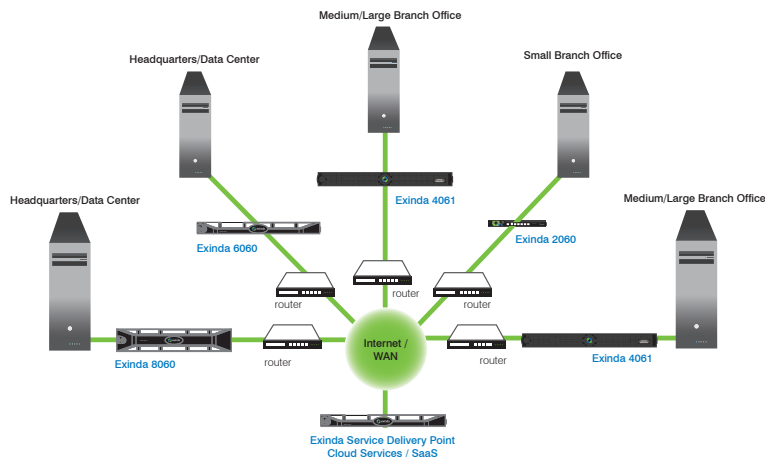
The challenge faced by IT professionals today, is how to gain visibility into the network, identify what applications and users are causing the congestion and put policies in place to ensure applications and data run smoothly over your network, despite the ever-increasing demand.

## The Solution

Exinda provide users with the best network experience possible by maximizing the speed and efficiency of applications over the network.

Exinda's unified performance management (UPM) solution brings together a suite of advanced, best-of-breed, visibility, traffic-shaping and WAN optimization technologies into a single, easy to-use appliance designed to improve network productivity.

Exinda is the only unified performance management solution on the market. Controlled through a seamlessly integrated, unified management console, Exinda reduces costs, increases revenue and allows you to get the most out of your network.



## Visibility

Make informed decisions on managing applications, user experience, and performance.

## Identification

- Layer 7 Classifications
- Heuristic Classification
- URL Classification
- Anonymous Proxy Detection
- Citrix Published Applications
- Active Directory User ID
- VoIP Codec

## Performance

- Application Performance Scoring
- VoIP Mean Opinion Scoring (MOS)
- Service Level Agreements
- Network Efficiency & TCP Health

## Reporting

- Drill Down Capabilities
- Real Time Monitoring
- Top Talkers/Top Conversations
- Automated PDF Reporting

## Control

Guarantee predictable application performance and improve user experience.

## Quality of Service

- QoS / Dynamic per IP / per User
- Application Predictability
- Bandwidth Guarantees & Limits
- Prioritization
- Traffic-shaping

## Fairness

- Bandwidth Management
- Active Directory Integration
- Dynamic Bandwidth Allocation
- Over-subscription

## Optimization

Improve application speed and user satisfaction.

## Protocol & Application

- Layer 4 TCP Optimization
- Layer 7 Application Acceleration
- SSL Acceleration

## Ease of Deployment

- Intelligent Flow Discovery
- Appliance Auto-Discovery
- Transparent (no tunneling)

## Caching

- Universal Caching
- Data Deduplication
- Compression
- Video Caching
- Dynamic URL Caching
- Software Update Caching
- Web Object Caching

## Exinda 2060 Hardware Specifications

Form Factor	19" 1U rack mount
Dimensions	431 x 44 x 277 mm, 17" x 1.7" x 10.9"
Weight	5 kg / 11 lb
CPU	1GHz Celeron
RAM	2GB
HDD	160GB
Data Store / Cache Size	112GB
NICs (default)	5 x 10/100/1000
NICs (expandable to)	not expandable
Bridges/Bypass Pairs (default)	2
Bridges/Bypass Pairs (expandable to)	not expandable
Interface NIC Slots	not expandable
Console	1 x COM Port (RJ-45)
Power Supply Type	Internal
Power Rating	Single power supply (150W), Auto Ranging (100V~240V)
Environment	0-40C, storage temp 20-80C relative humidity 0-90% (non-condensing)
Approvals	CE,FCC, Certified/RoHS

## Software Specifications

Licensed Bandwidth (full duplex)	x700 Software Visibility & Control			x800 Software Visibility, Control & Optimization		
	2	10	20	1	2	6
Max. Device Throughput (Mbps)	1,000	1,000	1,000	1,000	1,000	1,000
Max. Concurrent Flows	32,000	32,000	32,000	32,000	32,000	32,000
Max. L7 New Connection Rate	30	30	30	30	30	30
Reports (PDF)	4	4	4	4	4	4
SLAs	10	10	20	10	10	20
APS Objects	20	20	20	20	20	20
Policies	64	128	128	64	128	128
Edge Cache Max. Throughput (Mbps)	4	4	4	4	4	4
Edge Cache Requests per Second	100	100	100	100	100	100
		Optimized Connections		100	150	250
		WAN Optimization (Mbps)		1	2	6
		Max WAN Shaped/QoS (Mbps)		10	10	20
		Disk Size (GB)		160	160	160
		Data Storage (GB)		120	120	120

## About Exinda ®

Exinda is a proven global supplier of WAN Optimization and Traffic Shaping products. The company has helped over 2,000 organizations in 80 countries worldwide to reduce network operating costs and ensure consistent application performance over the WAN. The Exinda Unified Performance Management (UPM) solution encompasses application visibility, control, optimization and intelligent acceleration – all within a single network appliance that is affordable and easy to manage.

United States  
+1 877 439 4632  
[info.usa@exinda.com](mailto:info.usa@exinda.com)

Canada  
+1 877 439 4632  
[info.canada@exinda.com](mailto:info.canada@exinda.com)

Latin America  
+1 305 396 6399  
[info.latinamerica@exinda.com](mailto:info.latinamerica@exinda.com)

Australia / New Zealand  
+1 800 394632  
[info.anz@exinda.com](mailto:info.anz@exinda.com)

Asia Pacific  
+61 3 9415 8332  
[info.apac@exinda.com](mailto:info.apac@exinda.com)

India / Middle East / Africa  
+971 4 295 5049  
[info.imea@exinda.com](mailto:info.imea@exinda.com)

Europe  
+44 808 120 1996  
[info.emea@exinda.com](mailto:info.emea@exinda.com)

United Kingdom  
+44 1246 575 226  
[info.uk@exinda.com](mailto:info.uk@exinda.com)

Belgium / Netherlands / Luxembourg  
+31 6 11314484  
[info.benelux@exinda.com](mailto:info.benelux@exinda.com)