

Exinda 6060 - Quick Start Guide

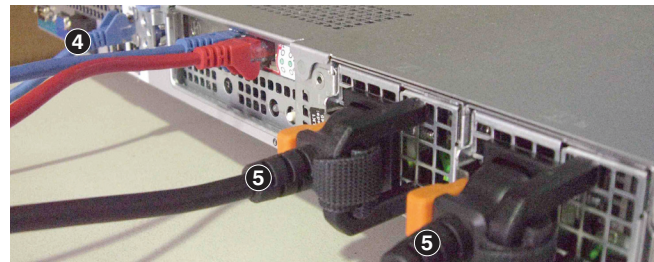
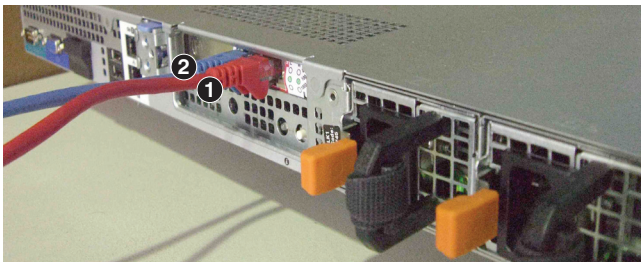
Review contents:

- 1 x Exinda Appliance
- 2 x Power leads
- 1 x UTP Straight cable (BLUE)
- 1 x UTP Crossover cable (RED)
- 1 x Serial cable
- 1 x Quick Start Guide

Information required for configuration:

- Speed/Duplex of Network Interface Cards (NICs)
- Email Address

Step One - Physical Installation



1. With the appliance powered OFF install a crossover cable (red) between Exinda's WAN port and the Router/Firewall.
2. Install a straight through cable (blue) between Exinda's LAN port and the LAN switch.
3. Ensure that there is still connectivity through the appliance. This will ensure that the Ethernet bypass is working.
4. Install a straight through cable (blue) between Exinda's management port (Gb1) and the LAN switch.
5. Plug in the power cords.
6. Switch on the appliance and ensure that the NIC lights flash and traffic is passing through.

Step Two - Jump Start from Web User Interface

1. The Exinda appliance by default will pick up an IP Address from DHCP. The IP Address is available on the management interface.
 Note: If a DHCP address is not picked up, the Exinda will default to the IP Address 172.14.1.57. Open a web browser and connect to the Web User Interface by typing <https://172.14.1.57> in the address field. You must configure the IP Address of your PC to the same subnet as the Exinda appliance – e.g. set your IP Address to 172.14.1.58, netmask 255.255.255.0
2. From a web browser go to the following website 'www.findmyexinda.com'. This will download an applet and automatically find the recently installed Exinda.
 Note: findmyexinda.com utilizes a multicast packet to find local Exinda units therefore you need to be on the same physical local LAN for this to work.
3. Click on the Exinda appliance that has been found.
4. Select Basic Mode and login with username=admin and password=exinda.
5. Click on Wizard and Start the Configuration Wizard
6. Complete all steps. You are done.

or from Serial Console / Command Line Interface

1. To access the Exinda via serial console use your preferred terminal software (e.g. HyperTerm) with the following settings -> Bits per second=9600, Bits=8, Parity=None, Stop bits=1, Flow Control=Hardware.
2. Login with username=admin and password=exinda.
3. When prompted to run the jumpstart answer yes. If not prompted execute the following commands to start the jumpstart:
 > enable, # configure terminal, # configuration jump-start
4. Complete all steps. Save and your Done.

Further Support - visit <http://www.exinda.com/support>