

The Exinda 6060

Unified Performance Management for Headquarters/Data Centers



The Exinda 6060

Designed for medium to headquarter offices and data centers, the 6060 model expands to support up to 1 Gbps worth of traffic and up to 10,000 users.

Built upon Exinda's new 64bit architecture, and featuring a multi queue network interface controller (NIC) combined with a multi threaded operating system (OS); this new model offers scalability and performance at a price that satisfies even the most cost-conscious buyers.

The Challenge

Everyday more and more data is being pushed across our networks. Increased growth and reliance of web based applications, VoIP, streaming video and Internet usage have congested our networks and made them unreliable. Network users are spending more and more time waiting at screen (TWAS) as applications compete for finite resources over stressed, over-run networks. This proliferation of traffic has degraded our networks' speed and performance and resulted in productivity losses.

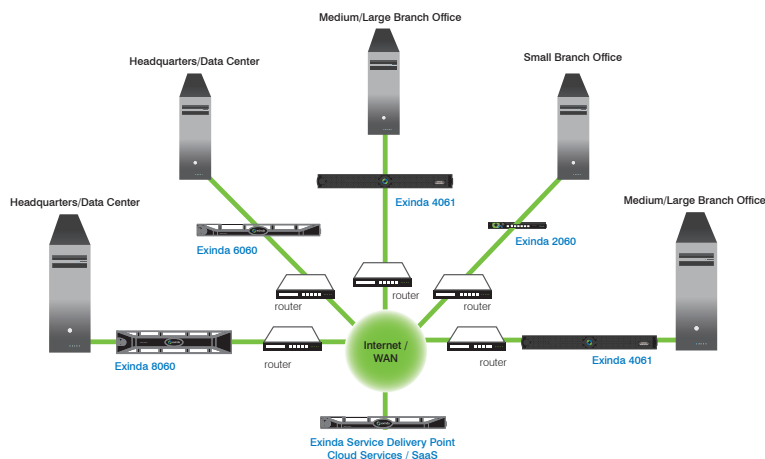
The challenge faced by IT professionals today, is how to gain visibility into the network, identify what applications and users are causing the congestion and put policies in place to ensure applications and data run smoothly over your network, despite the ever-increasing demand.

The Solution

Exinda provide users with the best network experience possible by maximizing the speed and efficiency of applications over the network.

Exinda's unified performance management (UPM) solution brings together a suite of advanced, best-of-breed, visibility, traffic-shaping and WAN optimization technologies into a single, easy to-use appliance designed to improve network productivity.

Exinda is the only unified performance management solution on the market. Controlled through a seamlessly integrated, unified management console, Exinda reduces costs, increases revenue and allows you to get the most out of your network.



Visibility

Make informed decisions on managing applications, user experience, and performance.

Identification

- Layer 7 Classifications
- Heuristic Classification
- URL Classification
- Anonymous Proxy Detection
- Citrix Published Applications
- Active Directory User ID
- VoIP Codec

Performance

- Application Performance Scoring
- VoIP Mean Opinion Scoring (MOS)
- Service Level Agreements
- Network Efficiency & TCP Health

Reporting

- Drill Down Capabilities
- Real Time Monitoring
- Top Talkers/Top Conversations
- Automated PDF Reporting

Control

Guarantee predictable application performance and improve user experience.

Quality of Service

- QoS / Dynamic per IP / per User
- Application Predictability
- Bandwidth Guarantees & Limits
- Prioritization
- Traffic-shaping

Fairness

- Bandwidth Management
- Active Directory Integration
- Dynamic Bandwidth Allocation
- Over-subscription

Optimization

Improve application speed and user satisfaction.

Protocol & Application

- Layer 4 TCP Optimization
- Layer 7 Application Acceleration
- SSL Acceleration

Ease of Deployment

- Intelligent Flow Discovery
- Appliance Auto-Discovery
- Transparent (no tunneling)

Caching

- Universal Caching
- Data Deduplication
- Compression
- Video Caching
- Dynamic URL Caching
- Software Update Caching
- Web Object Caching

Exinda 6060 Hardware Specifications

Form Factor	19" 1U rack mount
Dimensions	434 x 43 x 627 mm, 17.09" x 1.69" x 24.69"
Weight	11.8 kg / 31 lb
CPU	Intel® Xeon® E5504, 2.00GHz/4M,4C 80W
RAM	6GB Memory (3x2GB), 1333MHz Dual Ranked UDIMMs
HDD	500GB 7.2K RPM SATA 3.5"
Data Store / Cache Size	385GB
NICs (default)	2 x 10/100/1000 copper (onboard) + 2 x 10/100/1000 copper bypass (slot 1)
NICs (expandable to)	2 x 10/100/1000 copper (onboard) + 6 x 10/100/1000/10000 copper/fiber
Bridges/Bypass Pairs (default)	1
Bridges/Bypass Pairs (expandable to)	3
Interface NIC Slots	1
Console	RS-232 male DB-9
Power Supply Type	Dual Internal, Hotswap
Power Rating	Dual power supply (500W) - Redundant Auto Ranging (100V~240V)
Environment	0-40C, storage temp 20-80C relative humidity 0-90% (non-condensing)
Approvals	CE,FCC, Certified/RoHS

Software Specifications

Licensed Bandwidth (full duplex)	x700 Software Visibility & Control					x800 Software Visibility, Control & Optimization			
	45	100	250	500	1G	10	20	45	
Max. Device Throughput (Mbps)	10,000	10,000	10,000	10,000	10,000	10,000	10,000	10,000	
Max. Concurrent Flows	512,000	512,000	768,000	1,024,000	1,024,000	256,000	384,000	384,000	
Max. L7 New Connection Rate	1,000	1,000	1,000	1,000	1,000	1,000	1,000	1,000	
Reports (PDF)	20	20	40	60	60	20	30	40	
SLAs	100	100	250	250	250	100	100	250	
APS Objects	200	200	200	200	200	200	200	200	
Policies	1,024	1,024	1,536	2,048	2,048	1,024	1,536	1,536	
Edge Cache Max. Throughput (Mbps)	125	125	125	125	125	125	125	125	
Edge Cache Requests per Second	2,000	2,000	2,000	2,000	2,000	2,000	2,000	2,000	
						Optimized Connections	5,000	6,000	7,000
						WAN Optimization (Mbps)	10	20	45
						Max WAN Shaped/QoS (Mbps)	100	500	1000
						Disk Size (GB)	500	500	500
						Data Storage (GB)	385	385	385

About Exinda ®

Exinda is a proven global supplier of WAN Optimization and Traffic Shaping products. The company has helped over 2,000 organizations in 80 countries worldwide to reduce network operating costs and ensure consistent application performance over the WAN. The Exinda Unified Performance Management (UPM) solution encompasses application visibility, control, optimization and intelligent acceleration – all within a single network appliance that is affordable and easy to manage.

United States
+1 877 439 4632
info.usa@exinda.com

Canada
+1 877 439 4632
info.canada@exinda.com

Latin America
+1 305 396 6399
info.latinamerica@exinda.com

Australia / New Zealand
+1 800 394632
info.anz@exinda.com

Asia Pacific
+61 3 9415 8332
info.apac@exinda.com

India / Middle East / Africa
+971 4 295 5049
info.imea@exinda.com

Europe
+44 808 120 1996
info.emea@exinda.com

United Kingdom
+44 1246 575 226
info.uk@exinda.com

Belgium / Netherlands / Luxembourg
+31 6 11314484
info.benelux@exinda.com