

The Exinda 8060

Unified Performance Management for Headquarters/Data Centers



The Exinda 8060

Designed for headquarter offices and data centers, the 8060 model expands to support up to 5 Gbps worth of traffic and up to 100,000 users.

This appliance has dual power supplies and RAID 10 support. Built upon Exinda's new 64bit architecture, and featuring a multi queue network interface controller (NIC) combined with a multi threaded operating system (OS); this new model offers scalability and performance at a price that satisfies even the most cost-conscious buyers.

The Challenge

Everyday more and more data is being pushed across our networks. Increased growth and reliance of web based applications, VoIP, streaming video and Internet usage have congested our networks and made them unreliable. Network users are spending more and more time waiting at screen (TWAS) as applications compete for finite resources over stressed, over-run networks. This proliferation of traffic has degraded our networks' speed and performance and resulted in productivity losses.

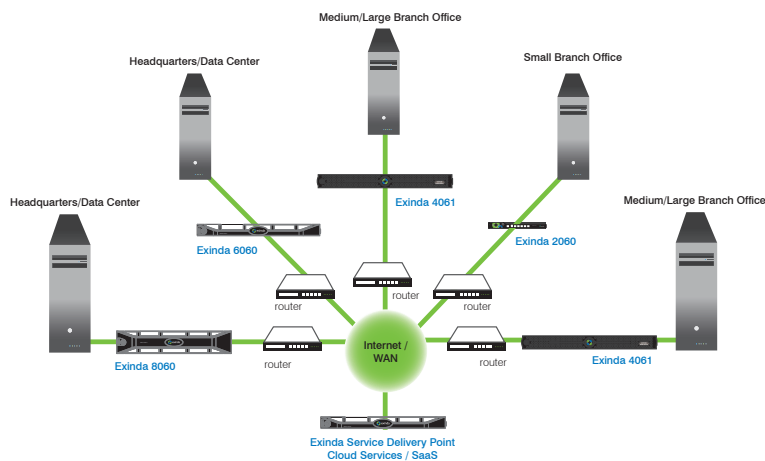
The challenge faced by IT professionals today, is how to gain visibility into the network, identify what applications and users are causing the congestion and put policies in place to ensure applications and data run smoothly over your network, despite the ever-increasing demand.

The Solution

Exinda provide users with the best network experience possible by maximizing the speed and efficiency of applications over the network.

Exinda's unified performance management (UPM) solution brings together a suite of advanced, best-of-breed, visibility, traffic-shaping and WAN optimization technologies into a single, easy to-use appliance designed to improve network productivity.

Exinda is the only unified performance management solution on the market. Controlled through a seamlessly integrated, unified management console, Exinda reduces costs, increases revenue and allows you to get the most out of your network.



Visibility

Make informed decisions on managing applications, user experience, and performance.

Identification

- Layer 7 Classifications
- Heuristic Classification
- URL Classification
- Anonymous Proxy Detection
- Citrix Published Applications
- Active Directory User ID
- VoIP Codec

Performance

- Application Performance Scoring
- VoIP Mean Opinion Scoring (MOS)
- Service Level Agreements
- Network Efficiency & TCP Health

Reporting

- Drill Down Capabilities
- Real Time Monitoring
- Top Talkers/Top Conversations
- Automated PDF Reporting

Control

Guarantee predictable application performance and improve user experience.

Quality of Service

- QoS / Dynamic per IP / per User
- Application Predictability
- Bandwidth Guarantees & Limits
- Prioritization
- Traffic-shaping

Fairness

- Bandwidth Management
- Active Directory Integration
- Dynamic Bandwidth Allocation
- Over-subscription

Optimization

Improve application speed and user satisfaction.

Protocol & Application

- Layer 4 TCP Optimization
- Layer 7 Application Acceleration
- SSL Acceleration

Ease of Deployment

- Intelligent Flow Discovery
- Appliance Auto-Discovery
- Transparent (no tunneling)

Caching

- Universal Caching
- Data Deduplication
- Compression
- Video Caching
- Dynamic URL Caching
- Software Update Caching
- Web Object Caching

Exinda 8060 Hardware Specifications

Form Factor	19" 2U rack mount
Dimensions	443 x 86 x 681 mm, 17.44" x 3.40" x 26.80"
Weight	26.1 kg / 57.52 lb
CPU	2 x E5530 Xeon Processor, 2.4GHz 8M Cache, Turbo, HT, 1066MHz Max Memory
RAM	12GB Memory (6 x 2GB), 1333MHz Dual Ranked UDIMMs for 2 Processors
HDD	6 x 500 GB 7.2K RPM Near Line SAS 3.5" Hot Plug Hard Drive (RAID 10)
Data Store / Cache Size	1.2TB
NICs (default)	4 x 10/100/1000 copper (onboard) + 2 x 10/100/1000 copper bypass (slot 1)
NICs (expandable to)	4 x 10/100/1000 copper (onboard) + 24 x 10/100/1000/10000 copper/fiber
Bridges/Bypass Pairs (default)	1
Bridges/Bypass Pairs (expandable to)	12
Interface NIC Slots	4
Console	RS-232 male DB-9
Power Supply Type	Dual Internal, Hotswap
Power Rating	Dual power supply (570W) - Redundant Auto Ranging (100V~240V)
Environment	0-40C, storage temp 20-80C relative humidity 0-90% (non-condensing)
Approvals	CE,FCC, Certified/RoHS

Software Specifications

Licensed Bandwidth (full duplex)	x700 Software Visibility & Control					x800 Software Visibility, Control & Optimization	
	100	250	500	1G	2.5G	100	155
Max. Device Throughput (Mbps)	10,000	10,000	10,000	10,000	10,000	10,000	10,000
Max. Concurrent Flows	2,048,000	2,048,000	2,048,000	2,048,000	5,120,000	512,000	512,000
Max. L7 New Connection Rate	6,000	6,000	6,000	6,000	6,000	6,000	6,000
Reports (PDF)	80	80	80	80	80	40	40
SLAs	250	250	250	250	250	250	250
APS Objects	250	250	250	250	250	250	250
Policies	2,048	2,048	2,048	2,048	2,048	2,048	2,048
Edge Cache Max. Throughput (Mbps)	175	175	175	175	175	175	175
Edge Cache Requests per Second	2,500	2,500	2,500	2,500	2,500	2,500	2,500
						Optimized Connections	10,000
						WAN Optimization (Mbps)	100
						Max WAN Shaped/QoS (Mbps)	500
						Disk Size (TB)	1.5
						Data Storage (TB)	1.2
							12,000
							155
							1,000
							1.5
							1.2

About Exinda ®

Exinda is a proven global supplier of WAN Optimization and Traffic Shaping products. The company has helped over 2,000 organizations in 80 countries worldwide to reduce network operating costs and ensure consistent application performance over the WAN. The Exinda Unified Performance Management (UPM) solution encompasses application visibility, control, optimization and intelligent acceleration – all within a single network appliance that is affordable and easy to manage.

United States
+1 877 439 4632
info.usa@exinda.com

Canada
+1 877 439 4632
info.canada@exinda.com

Latin America
+1 305 396 6399
info.latinamerica@exinda.com

Australia / New Zealand
+1 800 394632
info.anz@exinda.com

Asia Pacific
+61 3 9415 8332
info.apac@exinda.com

India / Middle East / Africa
+971 4 295 5049
info.imea@exinda.com

Europe
+44 808 120 1996
info.emea@exinda.com

United Kingdom
+44 1246 575 226
info.uk@exinda.com

Belgium / Netherlands / Luxembourg
+31 6 11314484
info.benelux@exinda.com